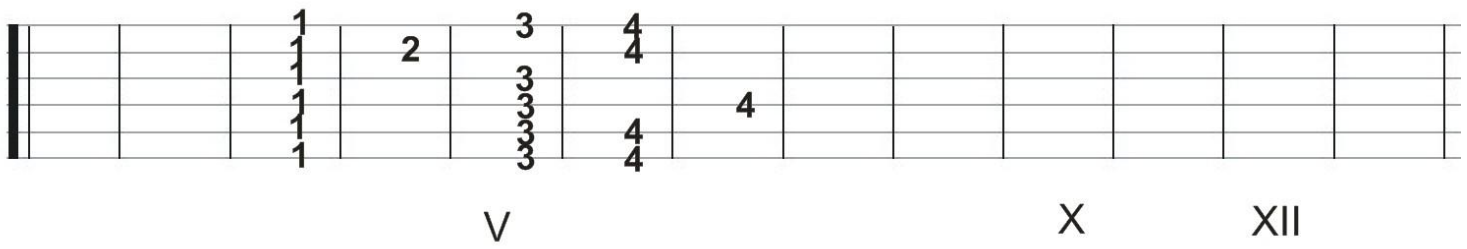
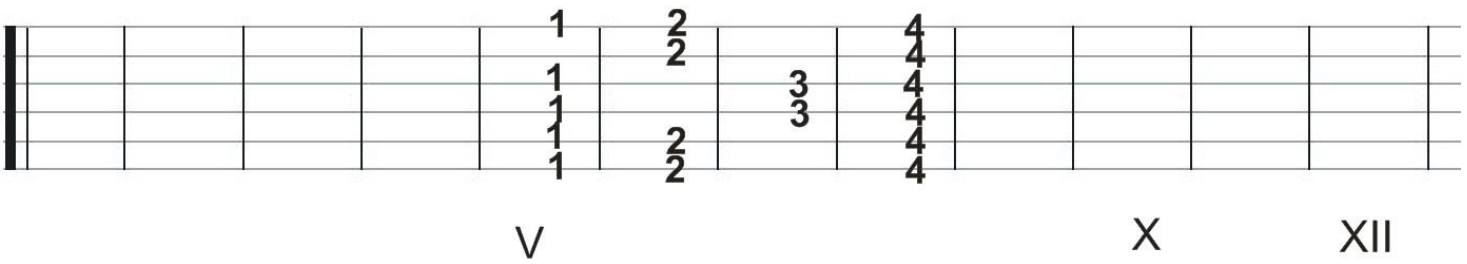


Escalas menores naturales

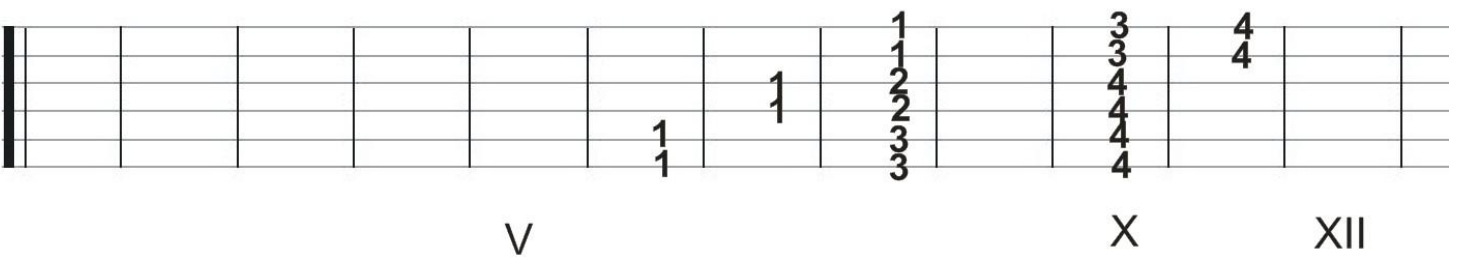
Modo Jónico



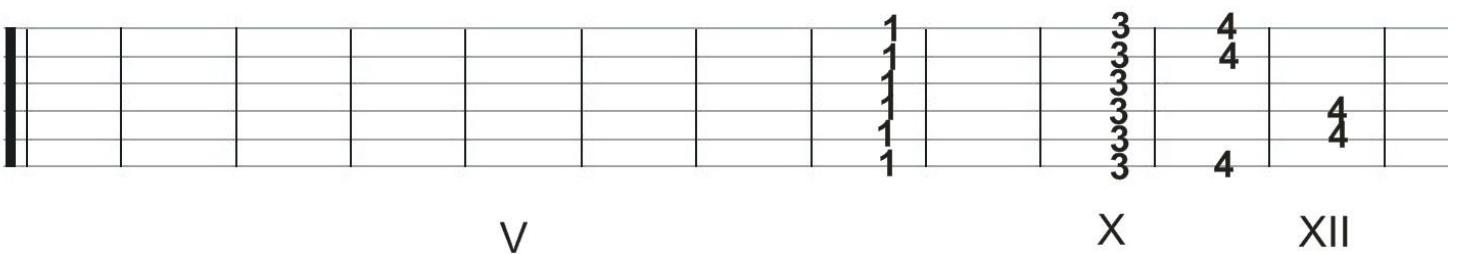
Modo Dórico



Modo Frígio



Modo Lídio



Modo Mixolídio

A musical staff with six lines and a thick black bar at the beginning. Fret markers are placed at the 5th, 10th, and 12th frets, labeled 'V', 'X', and 'XII' respectively. Fingerings are indicated by numbers 1-4. At the 10th fret, the notes G, A, B, C, D, E are fingered 1, 2, 1, 1, 1, 1. At the 12th fret, the notes G, A, B, C, D, E are fingered 2, 2, 3, 3, 3, 3. At the 14th fret, the notes G, A, B, C, D, E are fingered 4, 4, 4, 4, 4, 4.

Modo Eólico

A musical staff with six lines and a thick black bar at the beginning. Fret markers are placed at the 5th, 10th, and 12th frets, labeled 'V', 'X', and 'XII' respectively. Fingerings are indicated by numbers 1-4. At the 10th fret, the notes G, A, B, C, D, E are fingered 1, 1, 1, 1, 1, 1. At the 12th fret, the notes G, A, B, C, D, E are fingered 1, 2, 3, 3, 3, 3. At the 14th fret, the notes G, A, B, C, D, E are fingered 3, 3, 4, 4, 4, 4. At the 16th fret, the notes G, A, B, C, D, E are fingered 4, 4, 4, 4, 4, 4.

Modo Lócrio

A musical staff with six lines and a thick black bar at the beginning. Fret markers are placed at the 10th, 12th, and 15th frets, labeled 'X', 'XII', and 'XV' respectively. Fingerings are indicated by numbers 1-4. At the 10th fret, the notes G, A, B, C, D, E are fingered 1, 1, 1, 1, 1, 1. At the 12th fret, the notes G, A, B, C, D, E are fingered 1, 1, 1, 1, 1, 1. At the 15th fret, the notes G, A, B, C, D, E are fingered 1, 2, 3, 3, 3, 3. At the 17th fret, the notes G, A, B, C, D, E are fingered 2, 2, 4, 4, 4, 4. At the 19th fret, the notes G, A, B, C, D, E are fingered 3, 3, 4, 4, 4, 4. At the 21st fret, the notes G, A, B, C, D, E are fingered 4, 4, 4, 4, 4, 4.